



RECORD, DISPLAY & MANAGE YOUR HERITAGE COLLECTION

Designed **by** museums **for** museums, historical societies, galleries, libraries and private collections, usually a combination of objects, photographs, documents, books & artworks with data from associated historical research.

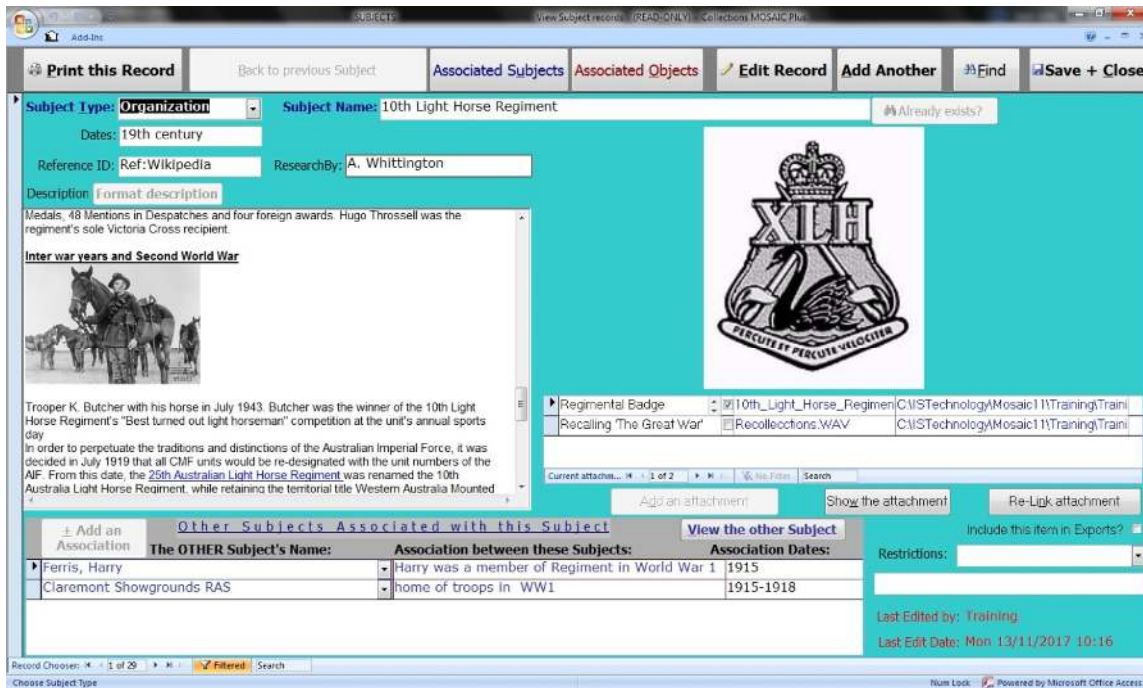
This system will show off your MOSAic of heritage, including the stories behind the artefacts. For instance - related people, places & events + digital images, oral histories & other files that add richness to the stories.

Standard Features

- Adaptable to differing types of collections
- Suits all sizes of collection from just a handful to millions of records
- Ready to go - "straight out of the box"
- No extra software required - everything is included
- Easy to get started, using the default setup
- Easy to use, no technical skills required, form-driven data entry
- Numerous (customisable) built-in lists to aid efficient data entry
- Extensive data validation built-in
- Focused on minimising data entry by extensive cross-referencing
- Personalisation module included
- Built-in collection management functions (e.g. Valuations, Loans, Audits)
- Automatic Location Movement recording
- Automatic edit logging
- Provision for various access levels, e.g. Read-Only access & Public Visitor access
- Form-driven searching via familiar forms
- Search by any field in any type of record
- View data in form mode or spreadsheet-style
- Export your selected data to your chosen output format
- Self-contained practise database included and ready to use
- Internet connectivity **optional**, but required for;
 - Easy exporting to the web (Choose which records are included)
 - Built-in emailing
 - Built-in remote help

Special Features

- Background Subjects (People, Places, Events etc.) entered separately
- Reference Library module included
- Attach an unlimited number of external files to your records
- Attach unlimited types of files
- Format the descriptions etc. and even insert images if required
- Forms expand to fill the entire screen



Editions

- Standalone - Fully installed on 1 computer.
- Network - Data installed on a Server, program installed on an unlimited number of Client computers, with simultaneous use limited by the no. of licenses purchased.
- SQL Edition - As for Network Edition, but using SQL Server for data storage (minimum of 5 simultaneous licenses).

System Requirements

- Windows 7 SP1 or later
- If your computer can run Windows 7, it can run Collections MOSAiC, but you will require an extra 3 GB of disk space for the software and database.
- You will also require sufficient disk space for your attachments (images, movies, oral histories, documents etc.)
- To get the full benefit of your attachments, you will also require software appropriate for those attachments (e.g. a PDF reader for attached PDF documents)